

Specifications

Electrical Ratings	200mA @ 30VDC	Dielectric Strength	1000Vrms min
Electrical Life	10,000 cycles typical	Insulation Resistance	>100MΩ min
Contact Resistance	<50mΩ initial	Operating Temperature	-40°C to 85°C
Actuation Force	200 ± 100gF	Storage Temperature	-40°C to 85°C
Actuation Travel	3.0mm total		

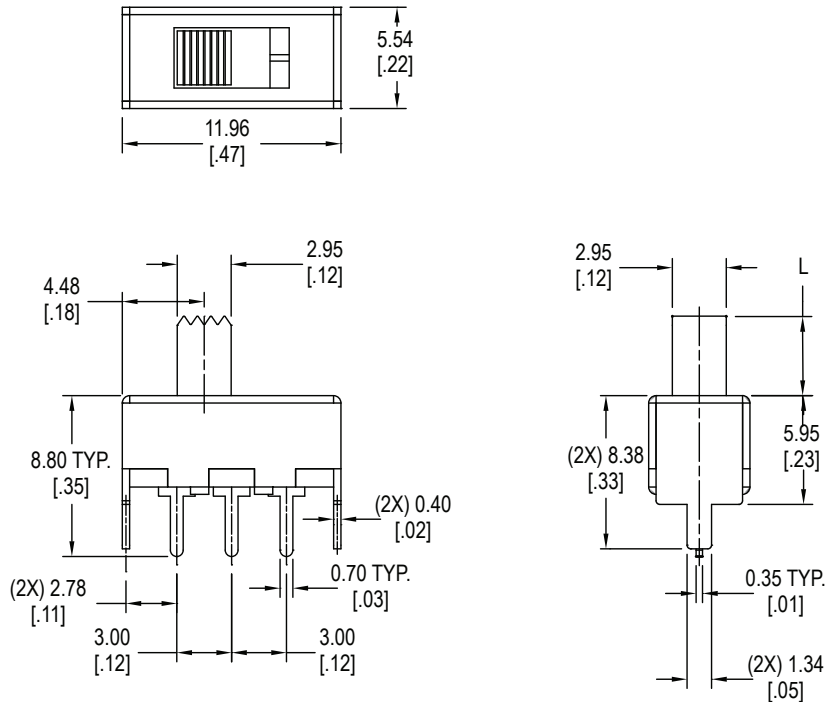
Materials

Actuator	6/6 Nylon
Housing	Steel
Base	Phenolic
Contacts	Phosphor Bronze, Silver Plated
Terminals	Brass, Silver Plated

Ordering Information

1. Series	MS1202	L6
	MS1202	
2. Actuator Length		
	L4 = 4mm	
	L6 = 6mm	

Dimensions



Schematic & PC Layout

